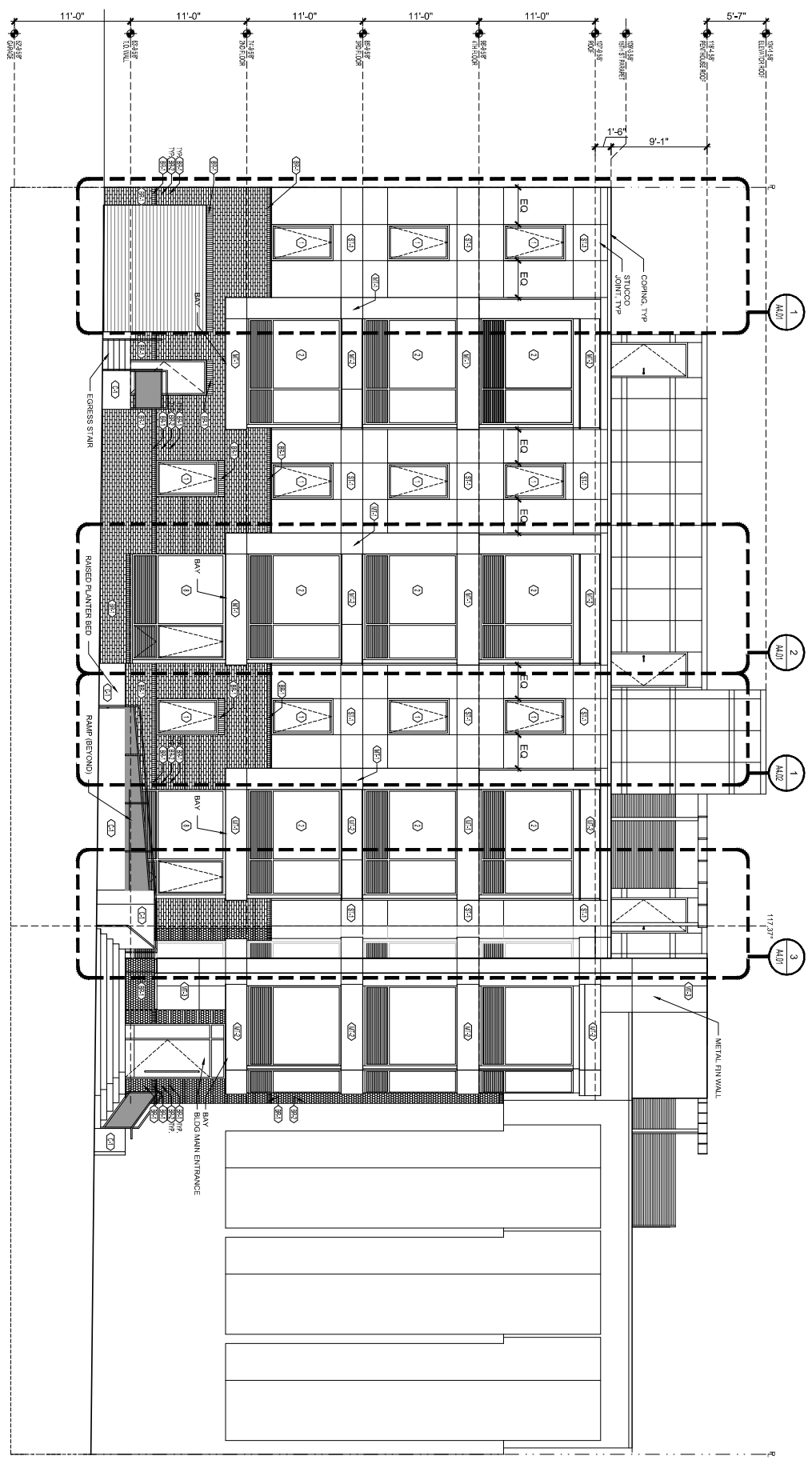
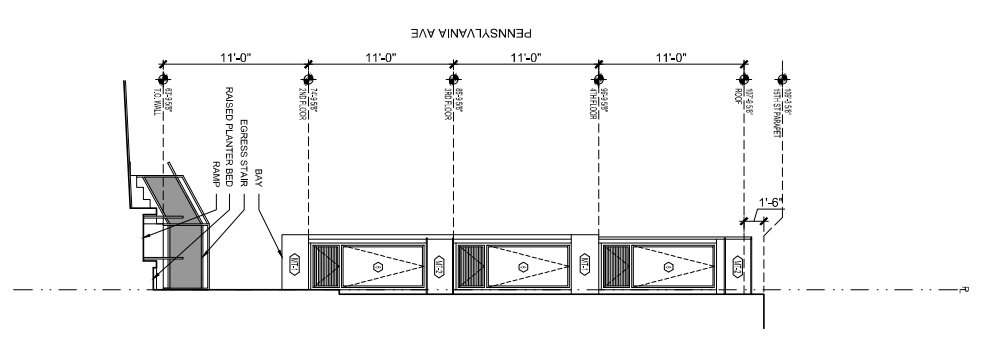


3 PENTHOUSE ELEVATION - 15TH ST.
3/16" = 1'-0"

4 PENTHOUSE ELEVATION
3/16" = 1'-0"



1 MAIN ELEVATION - 15TH ST.
3/16" = 1'-0"



2 SIDE OF BAY - 15TH ST.
3/16" = 1'-0"

GENERAL NOTES:

1. PROVIDE FINISHES, DIMENSIONS, MATERIALS, AND CONDITIONS AS SHOWN.
2. REFER TO ALL OTHER DRAWINGS FOR DIMENSIONS AND CONDITIONS.
3. VERIFY ALL DIMENSIONS AND CONDITIONS WITH THE ARCHITECT BEFORE CONSTRUCTION.
4. SEE WINDOW SCHEDULE FOR DETAILS ON ALL WINDOWS.

MATERIAL KEY:

- SP1 FACE BRICK STANDARD SIZE COLOR TBD
- SP2 FACE BRICK SHIMONS SIZE COLOR TBD
- SP3 FACE BRICK SHIMONS SIZE COLOR TBD
- SP4 CAST IN PLACE CONCRETE FINISH TBD
- MF1 METAL PANEL SYSTEM COLOR TBD
- MF2 METAL PANEL SYSTEM COLOR TBD
- MF3 METAL PANEL SYSTEM COLOR TBD

- ST1 3/4" STUCCO SYSTEM FINISH TBD COLOR TBD
- ST2 3/4" STUCCO SYSTEM FINISH TBD COLOR TBD

Goldstar 1500 Penn LLC
4630 Montgomery Avenue
Suite 500
Beltless, MD 20814

Client
Control Engineering Group, LLC
1522 CENTRAL AVENUE, SUITE 200
BETHESDA, MD 20814
301.271.4400

MEP ENGINEER
Ranger Engineering Associates
10777 PINEBROOK DRIVE
SODASVILLE, MD 21062
F: 301.271.4400

CONTRACTOR
Moshier Construction Group, Inc.
4875 COLUMBIA AVENUE, SUITE 100
ARLINGTON, VA 22207
P: 703.521.5800
F: 703.521.5818

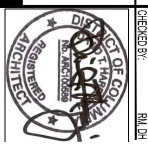
1500 PENNSYLVANIA AVENUE, SE
WASHINGTON, DC 20003

REVISIONS

NO.	DATE	DESCRIPTION
1	11/15/2023	

DATE	11/15/2023
PROJECT NO.	2023007
CLIENT	CONTROL ENGINEERING GROUP, LLC
ARCHITECT	BONSTAD HALESIGN ARCHITECTS

Bonstad Halesign
ARCHITECTS



A2.01
ELEVATIONS

1500 PENNSYLVANIA AVENUE, SE
WASHINGTON, DC 20003
www.bonstadahesign.com
301.271.4400
301.271.4401

Goldstar 1500 Penn LLC
 4630 Montgomery Avenue
 Suite 500
 Bethesda, MD 20814

Client: Engineering Group, LLC

1500 PENN
 11/15/2023
 11/15/2023
 11/15/2023

Structural Engineer
 Daniel Engineering Group, LLC
 1500 PENN
 11/15/2023
 11/15/2023

MEP Engineer
 Daniel Engineering Group, LLC
 1500 PENN
 11/15/2023
 11/15/2023

Contractor
 Mosley Construction Group, Inc.
 4875 Old Dominion Rd
 Arlington, VA 22207
 P: (703) 991-9900
 F: (703) 991-9919

1500 PENNSYLVANIA AVENUE, SE
 WASHINGTON, DC 20003

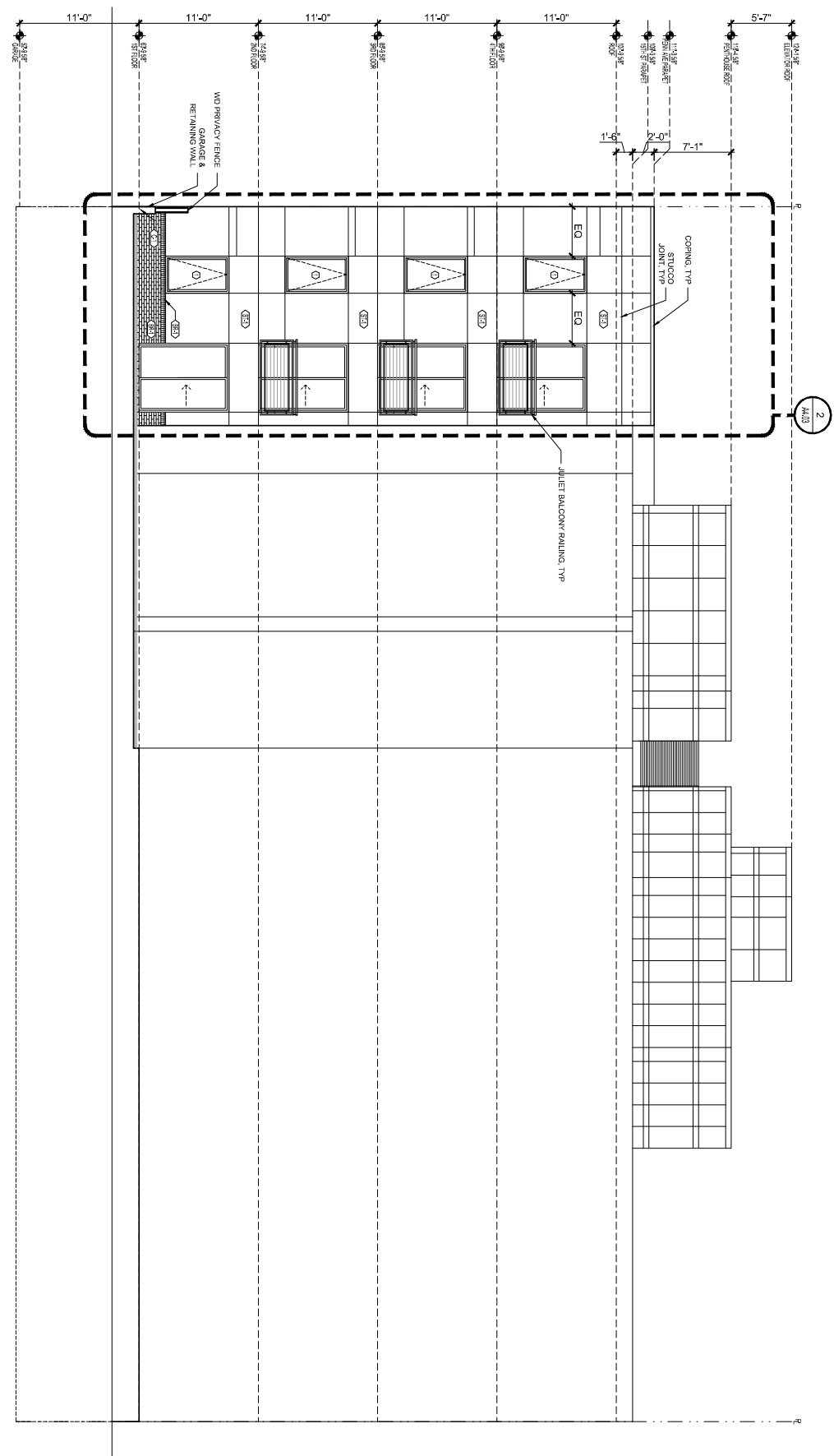
Revisions
 11/15/2023

DATE: 11/15/2023
 PROJECT NO: 2023007
 DRAWING NO: 001
 SHEET NO: 001



Bonstad Halesign
 ARCHITECTS

A2.08
 ELEMENTS



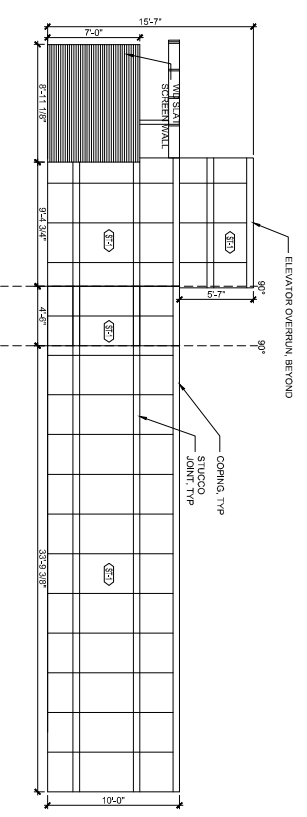
1 REAR ELEVATION
 3/16" = 1'-0"

GENERAL NOTES:

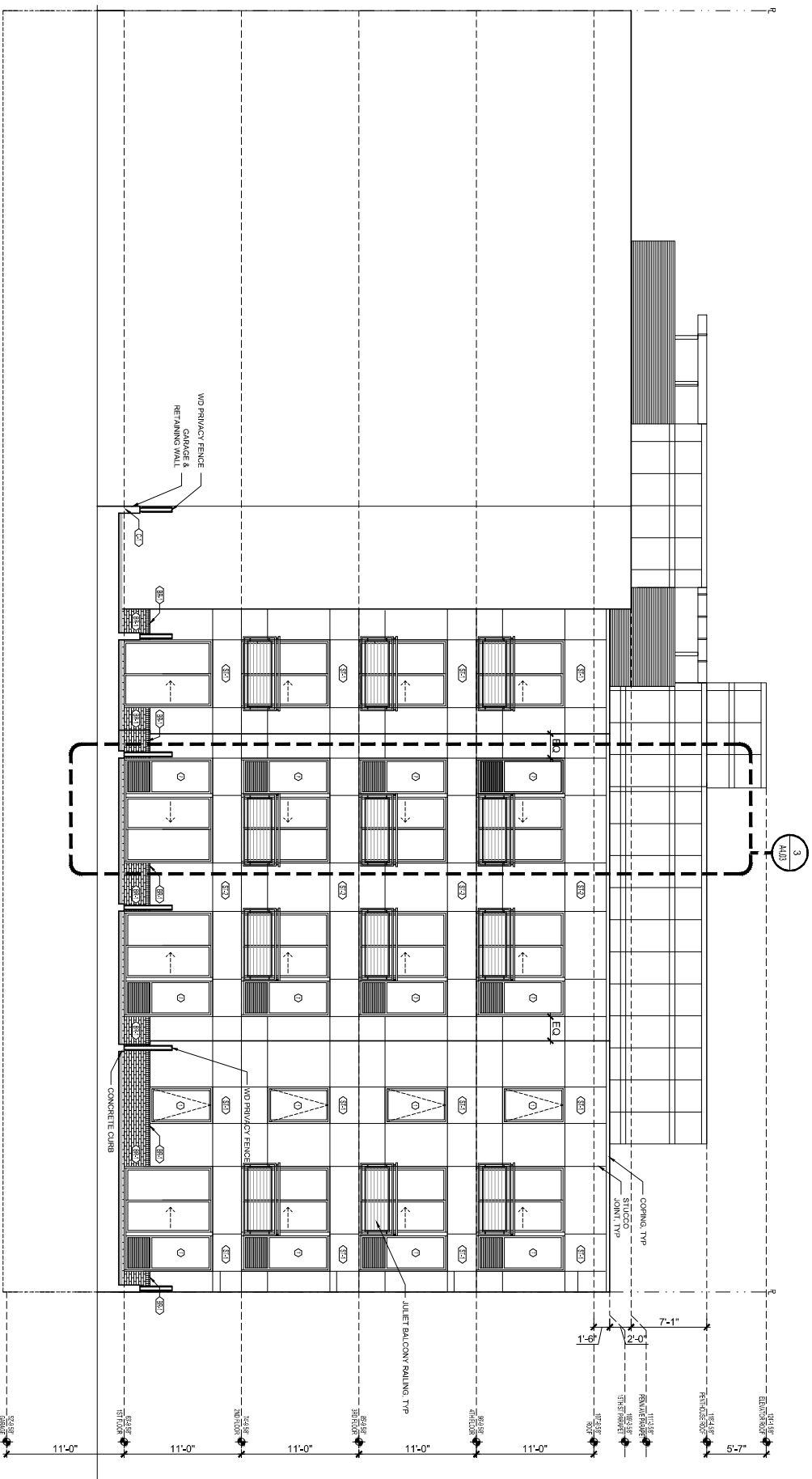
1. PROVIDE COORDINATE, DIMENSIONS, SYSTEM, HEIGHT, FINISHES, AND MATERIALS TO THE CONTRACTOR. IF DISCREPANCIES ARE NOTIFIED BETWEEN FIELD CONDITIONS AND DRAWINGS, CONTACT ARCHITECT FOR RESOLUTION BEFORE PROCEEDING. COORDINATE ALL WORK WITH THE CONTRACTOR.
2. VERIFY HEIGHTS AND COMPONENTS OF CONSTRUCTION SHALL BE IN THE SAME PLANE ACROSS VIEWS.
3. SEE WINDOW SCHEDULE FOR DETAILS ON ALL WINDOWS.
4. SEE WINDOW SCHEDULE FOR DETAILS ON ALL WINDOWS.

MATERIAL KEY:

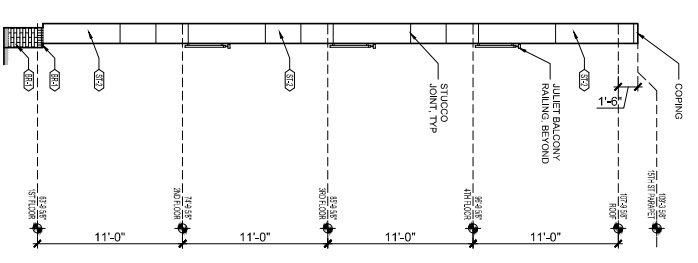
- SP1 FACE BRICK STANDARD SIZE COLOR TBD
- SP2 FACE BRICK STANDARD SIZE COLOR TBD
- SP3 FACE BRICK STANDARD SIZE COLOR TBD
- SP4 FACE BRICK STANDARD SIZE COLOR TBD
- SP5 FACE BRICK STANDARD SIZE COLOR TBD
- SP6 FACE BRICK STANDARD SIZE COLOR TBD
- SP7 FACE BRICK STANDARD SIZE COLOR TBD
- SP8 FACE BRICK STANDARD SIZE COLOR TBD
- SP9 FACE BRICK STANDARD SIZE COLOR TBD
- SP10 FACE BRICK STANDARD SIZE COLOR TBD
- SP11 FACE BRICK STANDARD SIZE COLOR TBD
- SP12 FACE BRICK STANDARD SIZE COLOR TBD
- SP13 FACE BRICK STANDARD SIZE COLOR TBD
- SP14 FACE BRICK STANDARD SIZE COLOR TBD
- SP15 FACE BRICK STANDARD SIZE COLOR TBD
- SP16 FACE BRICK STANDARD SIZE COLOR TBD
- SP17 FACE BRICK STANDARD SIZE COLOR TBD
- SP18 FACE BRICK STANDARD SIZE COLOR TBD
- SP19 FACE BRICK STANDARD SIZE COLOR TBD
- SP20 FACE BRICK STANDARD SIZE COLOR TBD
- SP21 FACE BRICK STANDARD SIZE COLOR TBD
- SP22 FACE BRICK STANDARD SIZE COLOR TBD
- SP23 FACE BRICK STANDARD SIZE COLOR TBD
- SP24 FACE BRICK STANDARD SIZE COLOR TBD
- SP25 FACE BRICK STANDARD SIZE COLOR TBD
- SP26 FACE BRICK STANDARD SIZE COLOR TBD
- SP27 FACE BRICK STANDARD SIZE COLOR TBD
- SP28 FACE BRICK STANDARD SIZE COLOR TBD
- SP29 FACE BRICK STANDARD SIZE COLOR TBD
- SP30 FACE BRICK STANDARD SIZE COLOR TBD
- SP31 FACE BRICK STANDARD SIZE COLOR TBD
- SP32 FACE BRICK STANDARD SIZE COLOR TBD
- SP33 FACE BRICK STANDARD SIZE COLOR TBD
- SP34 FACE BRICK STANDARD SIZE COLOR TBD
- SP35 FACE BRICK STANDARD SIZE COLOR TBD
- SP36 FACE BRICK STANDARD SIZE COLOR TBD
- SP37 FACE BRICK STANDARD SIZE COLOR TBD
- SP38 FACE BRICK STANDARD SIZE COLOR TBD
- SP39 FACE BRICK STANDARD SIZE COLOR TBD
- SP40 FACE BRICK STANDARD SIZE COLOR TBD
- SP41 FACE BRICK STANDARD SIZE COLOR TBD
- SP42 FACE BRICK STANDARD SIZE COLOR TBD
- SP43 FACE BRICK STANDARD SIZE COLOR TBD
- SP44 FACE BRICK STANDARD SIZE COLOR TBD
- SP45 FACE BRICK STANDARD SIZE COLOR TBD
- SP46 FACE BRICK STANDARD SIZE COLOR TBD
- SP47 FACE BRICK STANDARD SIZE COLOR TBD
- SP48 FACE BRICK STANDARD SIZE COLOR TBD
- SP49 FACE BRICK STANDARD SIZE COLOR TBD
- SP50 FACE BRICK STANDARD SIZE COLOR TBD
- SP51 FACE BRICK STANDARD SIZE COLOR TBD
- SP52 FACE BRICK STANDARD SIZE COLOR TBD
- SP53 FACE BRICK STANDARD SIZE COLOR TBD
- SP54 FACE BRICK STANDARD SIZE COLOR TBD
- SP55 FACE BRICK STANDARD SIZE COLOR TBD
- SP56 FACE BRICK STANDARD SIZE COLOR TBD
- SP57 FACE BRICK STANDARD SIZE COLOR TBD
- SP58 FACE BRICK STANDARD SIZE COLOR TBD
- SP59 FACE BRICK STANDARD SIZE COLOR TBD
- SP60 FACE BRICK STANDARD SIZE COLOR TBD
- SP61 FACE BRICK STANDARD SIZE COLOR TBD
- SP62 FACE BRICK STANDARD SIZE COLOR TBD
- SP63 FACE BRICK STANDARD SIZE COLOR TBD
- SP64 FACE BRICK STANDARD SIZE COLOR TBD
- SP65 FACE BRICK STANDARD SIZE COLOR TBD
- SP66 FACE BRICK STANDARD SIZE COLOR TBD
- SP67 FACE BRICK STANDARD SIZE COLOR TBD
- SP68 FACE BRICK STANDARD SIZE COLOR TBD
- SP69 FACE BRICK STANDARD SIZE COLOR TBD
- SP70 FACE BRICK STANDARD SIZE COLOR TBD
- SP71 FACE BRICK STANDARD SIZE COLOR TBD
- SP72 FACE BRICK STANDARD SIZE COLOR TBD
- SP73 FACE BRICK STANDARD SIZE COLOR TBD
- SP74 FACE BRICK STANDARD SIZE COLOR TBD
- SP75 FACE BRICK STANDARD SIZE COLOR TBD
- SP76 FACE BRICK STANDARD SIZE COLOR TBD
- SP77 FACE BRICK STANDARD SIZE COLOR TBD
- SP78 FACE BRICK STANDARD SIZE COLOR TBD
- SP79 FACE BRICK STANDARD SIZE COLOR TBD
- SP80 FACE BRICK STANDARD SIZE COLOR TBD
- SP81 FACE BRICK STANDARD SIZE COLOR TBD
- SP82 FACE BRICK STANDARD SIZE COLOR TBD
- SP83 FACE BRICK STANDARD SIZE COLOR TBD
- SP84 FACE BRICK STANDARD SIZE COLOR TBD
- SP85 FACE BRICK STANDARD SIZE COLOR TBD
- SP86 FACE BRICK STANDARD SIZE COLOR TBD
- SP87 FACE BRICK STANDARD SIZE COLOR TBD
- SP88 FACE BRICK STANDARD SIZE COLOR TBD
- SP89 FACE BRICK STANDARD SIZE COLOR TBD
- SP90 FACE BRICK STANDARD SIZE COLOR TBD
- SP91 FACE BRICK STANDARD SIZE COLOR TBD
- SP92 FACE BRICK STANDARD SIZE COLOR TBD
- SP93 FACE BRICK STANDARD SIZE COLOR TBD
- SP94 FACE BRICK STANDARD SIZE COLOR TBD
- SP95 FACE BRICK STANDARD SIZE COLOR TBD
- SP96 FACE BRICK STANDARD SIZE COLOR TBD
- SP97 FACE BRICK STANDARD SIZE COLOR TBD
- SP98 FACE BRICK STANDARD SIZE COLOR TBD
- SP99 FACE BRICK STANDARD SIZE COLOR TBD
- SP100 FACE BRICK STANDARD SIZE COLOR TBD



3 PENTHOUSE ELEVATION
3/16" = 1'-0"



1 REAR ELEVATION
3/16" = 1'-0"



2 REAR PROJECTION SIDE ELEVATION
3/16" = 1'-0"

GENERAL NOTES:

1. REFER TO ALL DRAWINGS FOR MATERIALS AND FINISHES. VERIFY ALL MATERIALS WITH THE CONTRACTOR. IF DISCREPANCIES ARE INDICATED BETWEEN FIELD CONDITIONS AND DRAWINGS, CONTACT ARCHITECT FOR RESOLUTION BEFORE PROCEEDING.
2. ALL MATERIALS SHALL BE INSTALLED AS SHOWN UNLESS OTHERWISE NOTED.
3. "UNLESS NOTED OTHERWISE" SHALL BE THE SAME FINISH ACROSS NOTES.
4. REFER DRAWING SCHEDULE FOR MATERIALS ON ALL WINDOWS.

MATERIAL KEY:

- BR-1 FACE BRICK, STANDARD GLAZED, COLOR TBD
- BR-2 FACE BRICK, STANDARD GLAZED, COLOR TBD
- C-1 CAST-IN PLACE CONCRETE, FINISH TBD
- MF-1 METAL PANEL SYSTEM, COLOR TBD
- MF-2 METAL PANEL SYSTEM, COLOR TBD
- MF-3 METAL PANEL SYSTEM, COLOR TBD
- SC-1 3/4" STUCCO SYSTEM, FINISH TBD, COLOR TBD
- SC-2 3/4" STUCCO SYSTEM, FINISH TBD, COLOR TBD

Goldstar 1500 Penn LLC
4630 Montgomery Avenue
Suite 500
Bethesda, MD 20814

Client: Goldstar 1500 Penn LLC
Project: 1500 Pennsylvania Avenue, SE
Location: Washington, DC 20003
Contractor: Moseley Construction Group, Inc.

Structural Engineer: Ronghai Geotechnical
10717 Peach Street, N.W.
Silverdale, WA 98158
P: (206) 885-8888
F: (206) 885-8889

MEP Engineer: Capelli Engineering Group, LLC
1522 Capital Blvd, Suite 300
Bethesda, MD 20814
Tel: (301) 440-8888

1500 PENNSYLVANIA AVENUE, SE
WASHINGTON, DC 20003

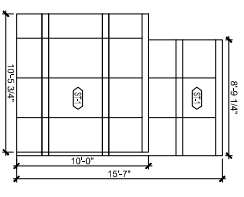
Bonshid Halesign
ARCHITECTS

DATE: 11.16.2023
PROJECT NO: 2023007
DRAWING NO: 001
SCALE: AS SHOWN

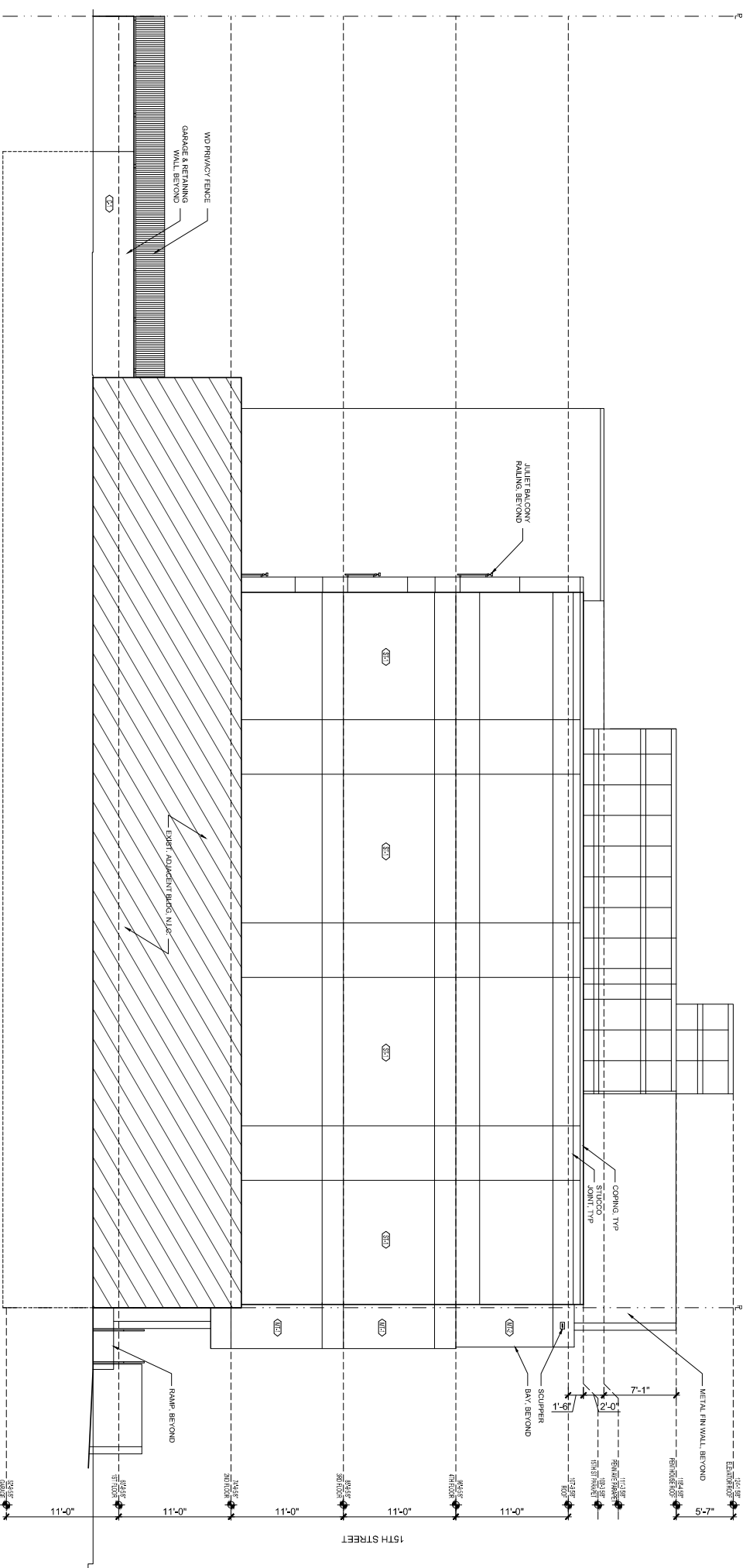
PROJECT: 1500 PENNSYLVANIA AVENUE, SE
WASHINGTON, DC 20003

1500 PENNSYLVANIA AVENUE, SE
WASHINGTON, DC 20003

A2.05



2 PENTHOUSE ELEVATION
 3/16" = 1'-0"



1 NORTH ELEVATION
 3/16" = 1'-0"

GENERAL NOTES:

- 1. TO OBTAIN EXACT FINISHES, CONSULT MANUFACTURERS FOR MATERIAL CONDITIONS. ALL DIMENSIONS ARE INDICATED BETWEEN FINISH CONDITIONS UNLESS OTHERWISE NOTED.
- 2. RESOLUTION BEFORE PROCEEDING WITH CONSTRUCTION IS 48 HOURS BEFORE WORK.
- 3. "ALUM" MEANS ALUMINUM UNLESS OTHERWISE SPECIFIED.
- 4. SEE MATERIAL SPECIFICATIONS FOR ALL MATERIALS.

MATERIAL KEY:

- BR1 FACE BRICK STUCCO SYSTEM COLOR TBD
- BR2 FACE BRICK STUCCO SYSTEM COLOR TBD
- C1 CAST-IN PLACE CONCRETE FINISH TBD
- MF1 METAL PANEL SYSTEM COLOR TBD
- MF2 METAL PANEL SYSTEM COLOR TBD
- MF3 METAL PANEL SYSTEM COLOR TBD
- ST1 STUCCO STUCCO SYSTEM FINISH TBD COLOR TBD
- ST2 STUCCO STUCCO SYSTEM FINISH TBD COLOR TBD

Goldstar 1500 Penn LLC
 4630 Montgomery Avenue
 Suite 500
 Bethesda, MD 20814

Client Engineering Group, LLC
 1522 CENTRAL AVENUE
 SUITE 100
 BETHESDA, MD 20814
 301.714.8888

Designer: Gosh Associates
 18717 PINEBROOK DRIVE
 SUITE 100
 FALLS CHURCH, VA 22031

Modeler: Construction Group, Inc.
 4875 OLD OAK LANE #103
 ARLINGTON, VA 22207
 P: (703) 971-5900
 F: (703) 971-5919

1500 PENNSYLVANIA AVENUE, SE
 WASHINGTON, DC 20003

REVISIONS

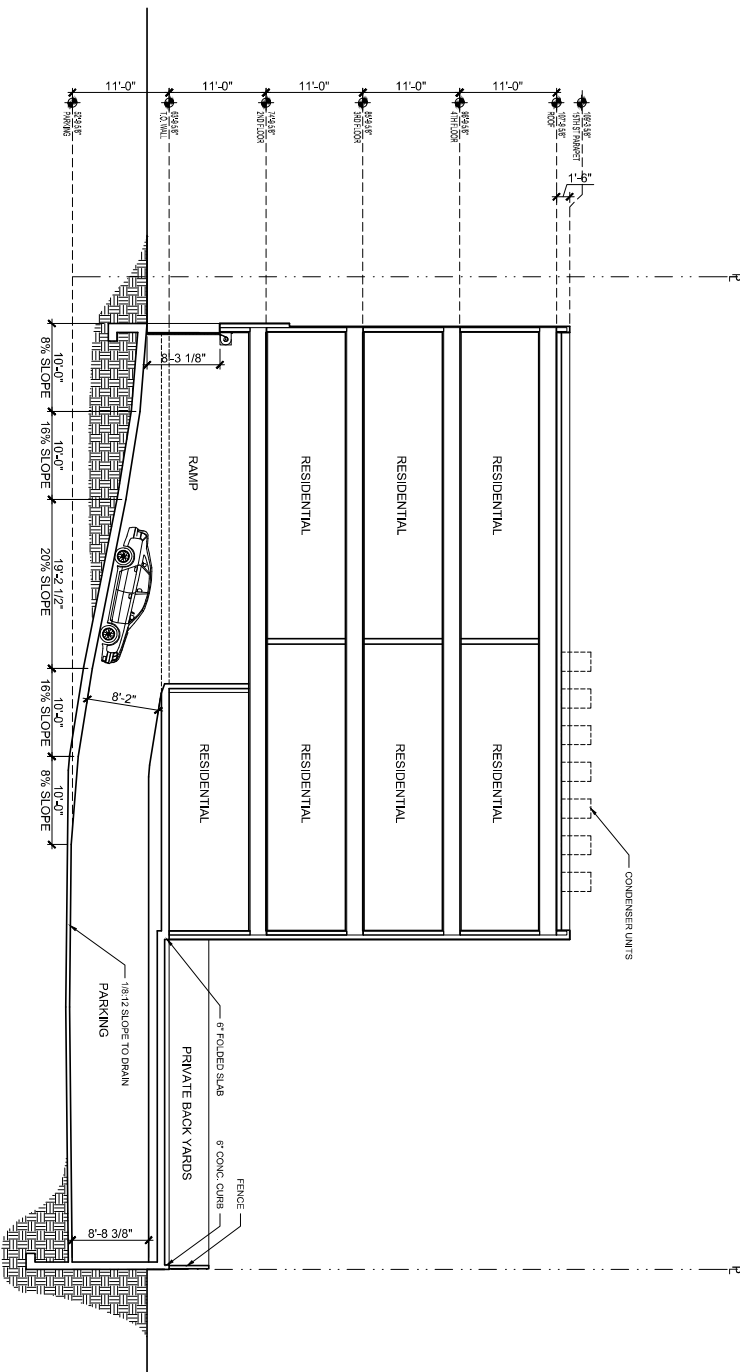
NO.	DATE	DESCRIPTION
1	11/15/2023	

DATE	11/15/2023
PROJECT NO.	230107
CLIENT	1500 PENN
DESIGNER	GOSH ASSOCIATES
MODELER	CONSTRUCTION GROUP, INC.

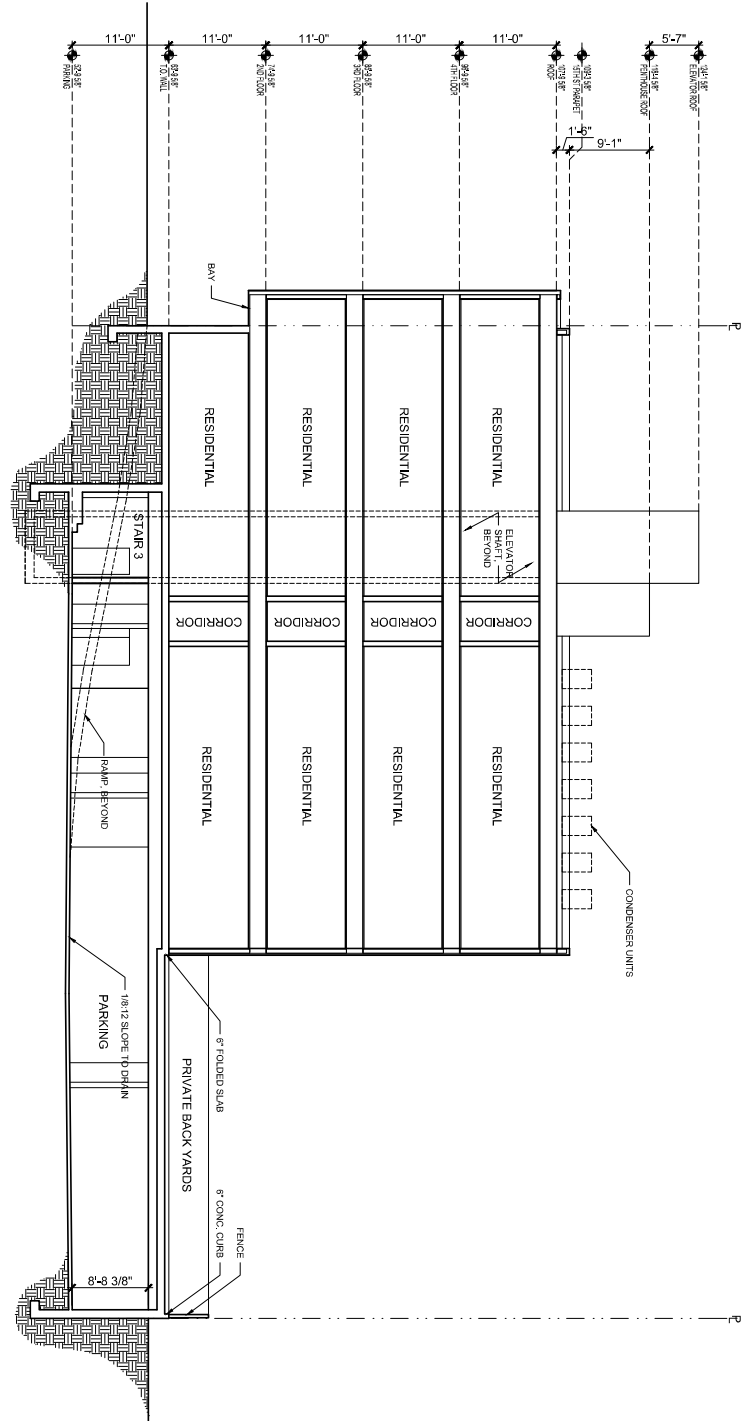
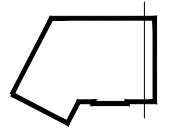
Bonstad Halesign
 ARCHITECTS



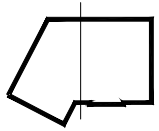
A2.06



1 BUILDING SECTION
1/8" = 1'-0"



2 BUILDING SECTION
1/8" = 1'-0"



Goldstar 1500 Penn LLC
4630 Montgomery Avenue
Suite 500
Bethesda, MD 20814

Client
Capital Engineering Group, LLC
1522 Central Expressway
Suite 200
Dorset, MA 01922
508-751-1400

MEP Engineer
Ranger MEP Associates
10717 Potomac Street, NW
Suite 100
Farmingdale, NY 11737
516-352-0000

Structural Engineer
Moshier Construction Group, Inc.
4875 Corporate Center Drive
Arlington, VA 22207
P: (703) 971-5900
F: (703) 971-5919

Contractor
Moshier Construction Group, Inc.
4875 Corporate Center Drive
Arlington, VA 22207
P: (703) 971-5900
F: (703) 971-5919

1500 PENNSYLVANIA AVENUE, SE
WASHINGTON, DC 20003

Revisions
11/15/2023

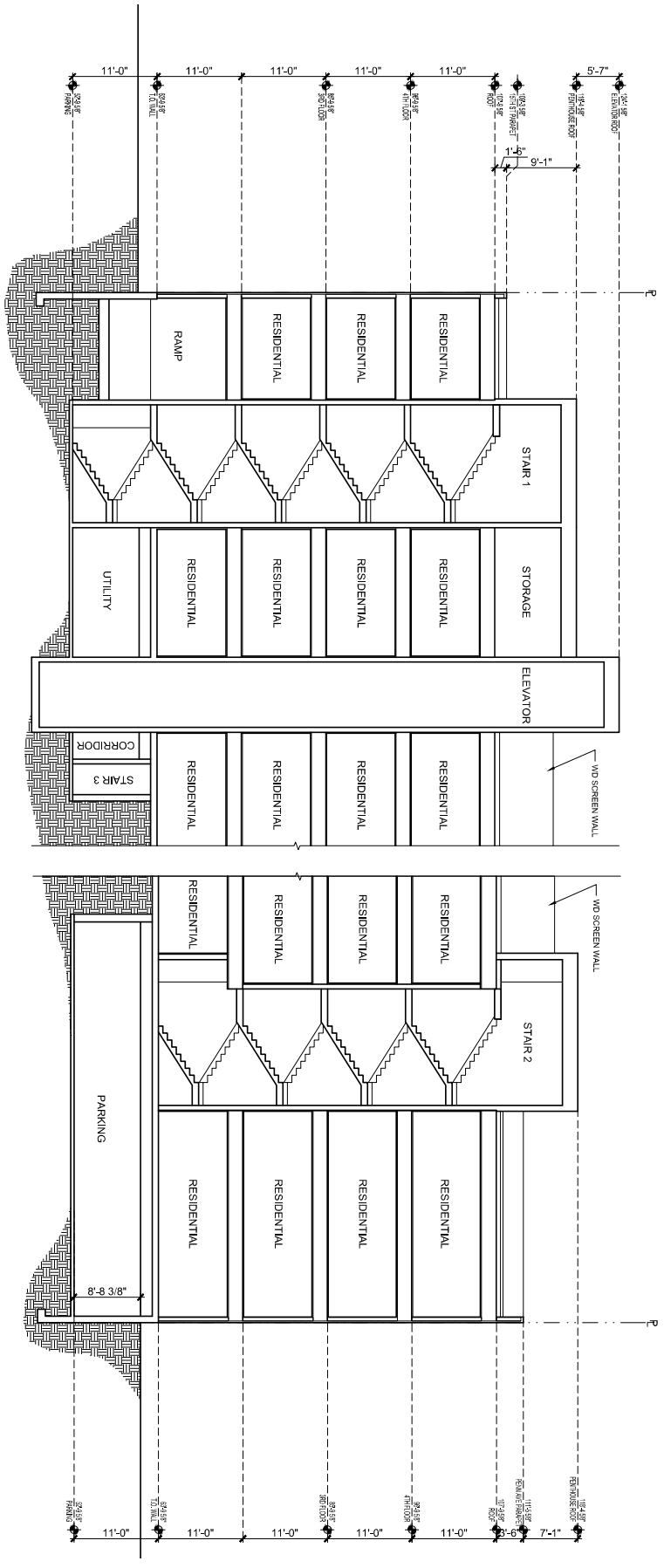
DATE	BY	REVISION
11-15-2023	MM	ISSUE FOR PERMIT
08-10-2023	MM	ISSUE FOR PERMIT
08-10-2023	MM	ISSUE FOR PERMIT

Bonstid Halesign

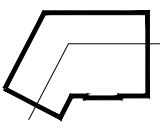


1575 Connecticut Avenue, NW, Suite 402
Washington, DC 20004-1199
www.bonstidhalesign.com
202-338-8888
202-338-8889

A3.01



1 BUILDING SECTION
AS20 1/8" = 1'-0"



Goldstar 1500 Penn LLC
4630 Montgomery Avenue
Suite 500
Beltless, MD 20814

Client
Central Engineering Group, LLC
1522 Greenway Blvd, Suite 300
Beltless, MD 20814
301.714.4400
CENTENR@CEG.COM

MEP ENGINEER
Ranger Engineering Associates
5871 Peach Street, N.W.
Soquel, CA 95073
F: 408.686.8000

Structural Engineer
Moshier Construction Group, Inc.
4875 Greenway Blvd, Suite 300
Beltless, MD 20814
P: 301.714.4400
F: 202.824.8188

1500 PENNSYLVANIA AVENUE, SE
WASHINGTON, DC 20003

REVISIONS

NO.	DATE	DESCRIPTION
1	11/15/2023	

DATE	11/15/2023
PROJECT NO.	2023007
CLIENT	GOLDSTAR 1500 PENN
ARCHITECT	BONSTAD HALESIGN



Bonstad Halesign
ARCHITECTS

3775 Connecticut Avenue, NW, Suite 402
Washington, DC 20007-1199
www.bonstadhalesign.com
202.293.8888
202.293.8888